



Silva

Collection

2tec2[®]
high tech flooring



2tec2
high tech flooring

2TEC2 is a 100% Belgian company devoted to designing and producing high-tech woven flooring.

In addition to its focus on aesthetics, the company also highly values innovation. Every day, 2TEC2 strives to improve its products in terms of quality, functionality and sustainability.

"The passion for fibres, the love of colours and the determination to use eco-conscious materials are the foundations of our company's philosophy."

Silva collection

Introduction	2
Interwoven with nature	4
Ash	6
Maple	9
Olive	11
Meranti	12
Teak	15
Ebony	16
Collection overview	18
Installation patterns	20



The mystical
tranquillity of nature
woven into your floor
coverings.

Silva is the Latin name for 'wood' or 'forest', and this perfectly epitomises this collection. With a single step, you are transported to woodlands, where the branches and leaves sway to the rhythm of the breeze and thus create a unique play of shadows. The design is inspired by the trunk of a majestic tree, with grains that seem to stretch ever further. The annual rings attest to a durable strength as time evolves.

Interwoven with nature

2tec2 strives to deliver a durable, superior product while preserving and protecting the world beneath our feet.

Our environmental ambition is to move ever closer to an entirely circular & closed-loop production model and we are achieving this through various initiatives and a careful selection of our raw materials and manufacturing methods.

Our choice of raw materials is constantly being refined, from our felt backing layer made out of recycled PET, to the increasing adoption of renewable materials in our flooring. This attention to detail extends to the conscious reuse of leftover cuttings and excess production materials - ensuring we waste nothing.

Discover our entire sustainability journey on [2tec2.com](https://www.2tec2.com).



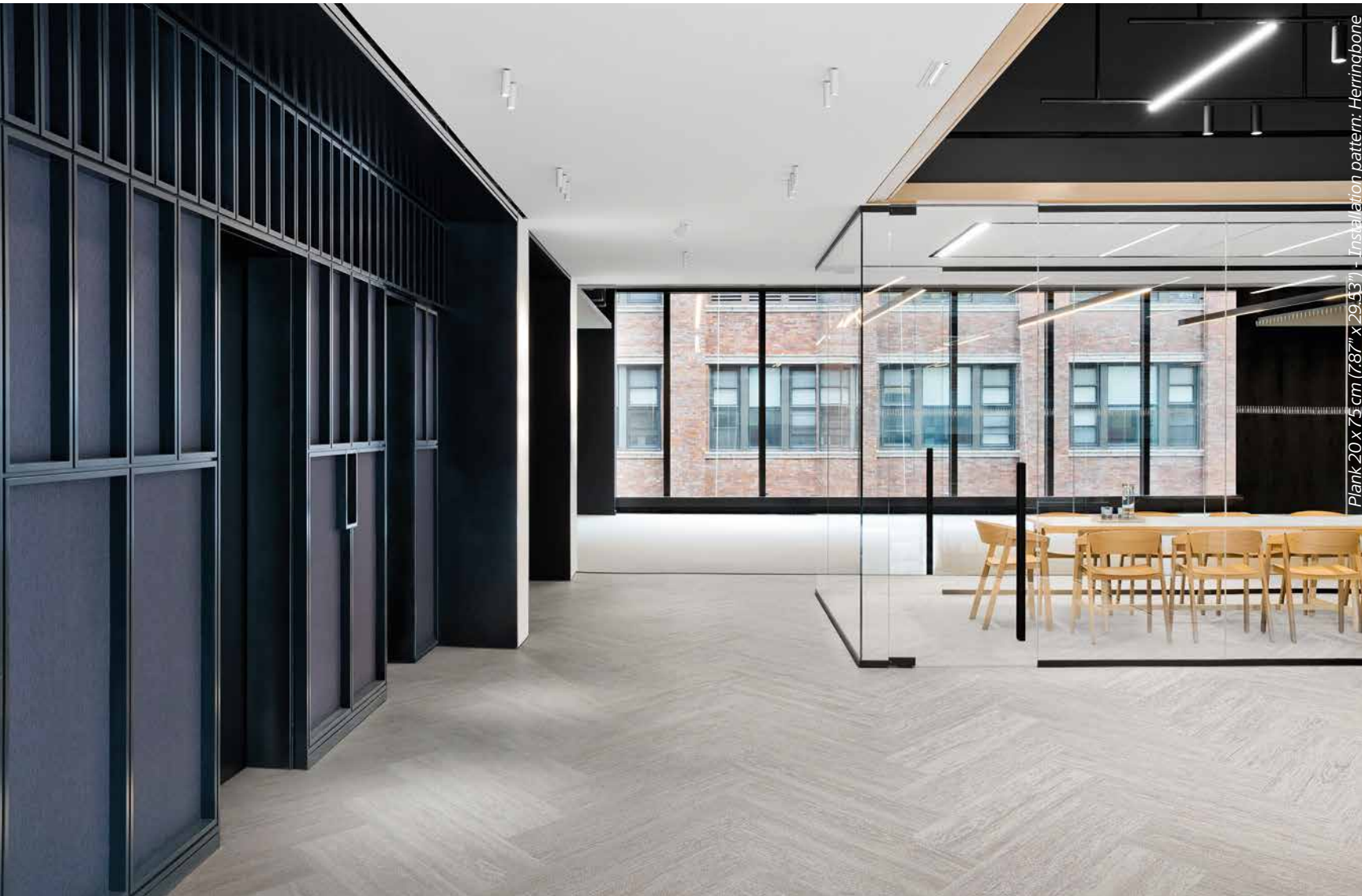


Ash

In mythology and folklore, the ash tree is believed to have mystical properties. With its swirling patterns and soft, smoky hues, Ash translates those properties into a mesmerizing pattern, evoking a refined and mysterious atmosphere that suits all types of interiors.



Plank: 20 x 75 cm (78.7" x 29.53") - Installation pattern: Random staggered

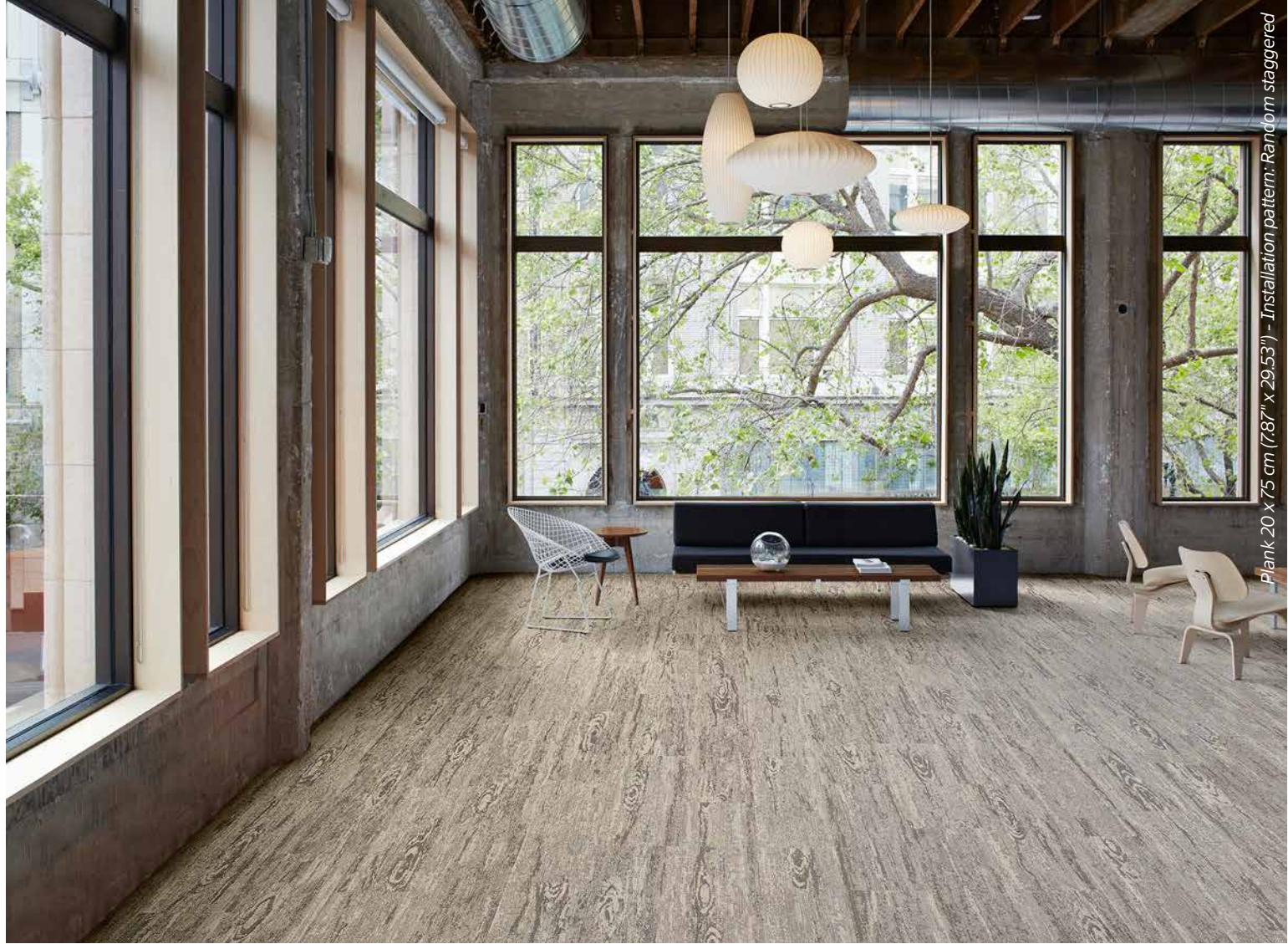


Plank 20 x 75 cm (787" x 29.53") - Installation pattern: Herringbone



Maple

The unique creamy white tones of maple wood are easy on the eye and blend in effortlessly with any interior. With its flowing pattern of light shades, Maple opens up even the smallest spaces, infusing an uplifting sense, calm and brightness.



Plank 20 x 75 cm (7.87" x 29.53") - Installation pattern: Random staggered

Olive

Inspired by the lofty olive trees dotting sun-soaked landscapes, Olive's twisted patterns and rich color infuses your interior with calm, Mediterranean vibes.



Plank 20 x 75 cm (7.87" x 29.53") - Installation pattern: Random staggered

Meranti

Across Southeast Asia, lush tropical forests are dotted with the spectacular meranti trees, towering high above the skyline. This Meranti pattern extends the evergreen character of these majestic trees to your interior, elevating it to an other-worldly level.

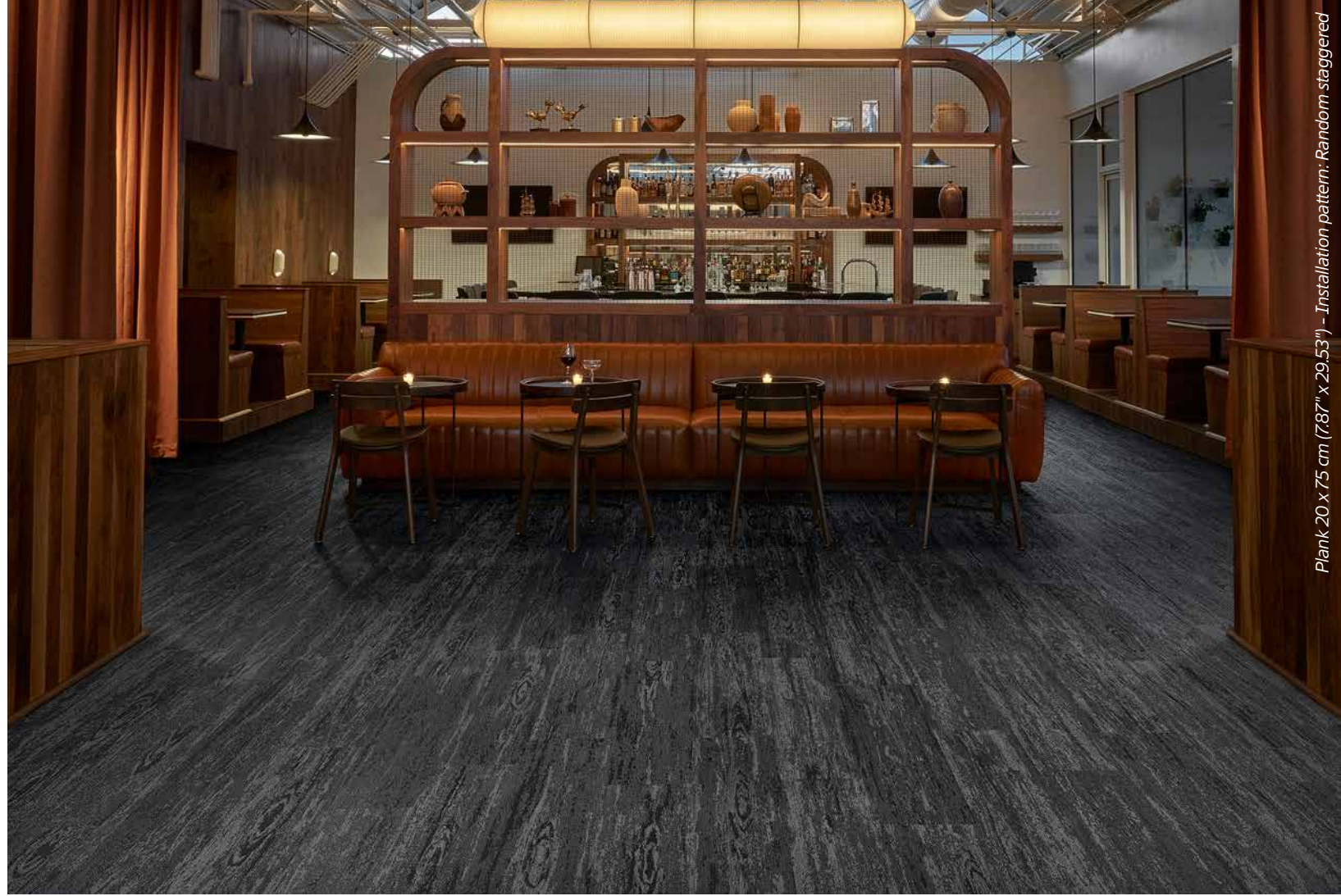


Plan: 20 x 25 cm (7.87" x 29.53") - Installation pattern: Random staggered

Teak

As a symbol of luxury and class, teak is the king of woods, durable and full of character.

Quality teak wood is characterized by its vibrant patterns and beautiful silver-grey hue that appears over time, mirrored in this elegant motif that will elevate your interior to a new level of sophistication.

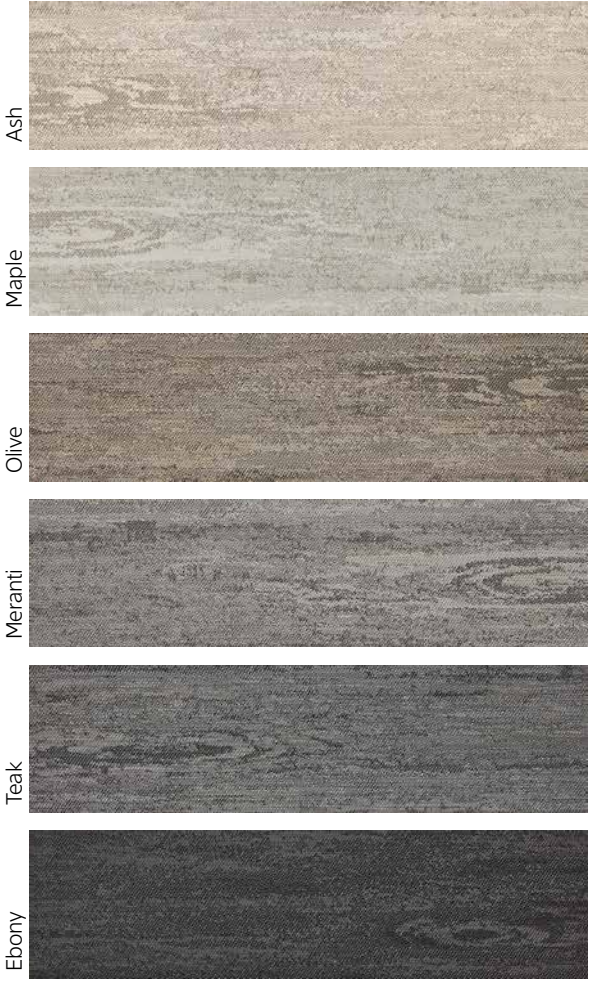


Ebony

Synonymous with luxury and mystery, the majestic ebony tree grows in the magical rain forests and its jet-black heart is an ornamental staple to elevate interiors since ancient times. The mesmerizing swirls and darker shades of this Ebony pattern transforms any interior into a stylish and sophisticated statement.

Plank 20 x 75 cm (7.87" x 29.53") - Installation pattern: Random staggered

Collection overview

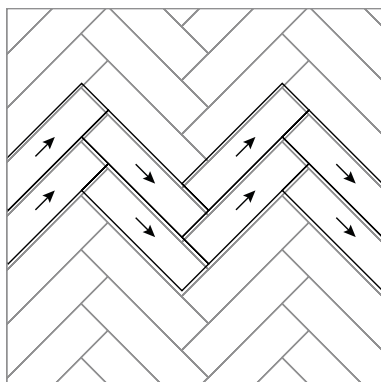


Teak - Plank 20 x 75 cm (7.87" x 29.53") - Installation pattern: Random staggered

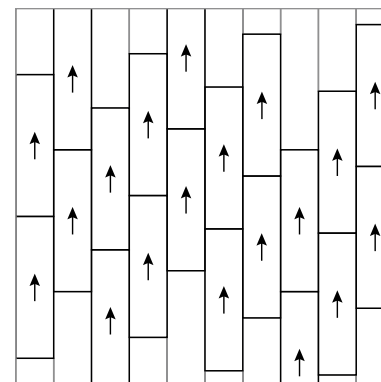
Installation patterns



Installation pattern:
Herringbone - Plank 20 x 75 cm (7.87" x 29.53")



Installation pattern:
Random staggered - Plank 20 x 75 cm (7.87" x 29.53")





Strong and long-lasting

- Extremely robust
- Resists office chairs & heavy traffic
- Long life span & UV-resistant



Sustainable footprint

- Felt backing made of recycled PET
- Designed for circularity: fully recyclable
- Suitable for projects according to BREEAM, LEED & WELL Building Standard®



Hygienic and easy to clean

- Stain resistant & waterproof
- Maintenance with clear water, no chemicals



Acoustic sound absorption

- 70% walking noise reduction
- 19 dB impact sound reduction



High quality & high comfort

- 100% designed & made in Belgium
- Excellent underfoot comfort
- Mold-free & anti-allergic properties



Innovative design

- High-end look
- Planks 20 x 75 cm (7.87" x 29.53")

Headquarters and showroom
(BY APPOINTMENT)

Chaussée d'Aelbeke 284
7700 Mouscron, Belgium
+32 56 85 47 47
sales@2tec2.com

2tec2.com





atec2[®]
high tech flooring