

Square

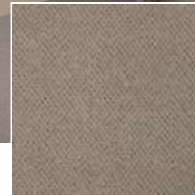
Polyamide carpet, known for its durability, can be used in any room. One of the most important advantages is the fact that the carpet fibers can stand up to a lot of wear and tear. This makes the use of nylon carpeting especially practical in areas where there is a lot of foot traffic since the synthetic fibers hold their shape longer than many other types of fibers. As a result, the pile of the polyamide carpeting looks new and fresh for many more years than other carpeting selections.

APPLICATIONS

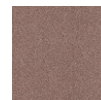
- Bedroom
- Living Room

TECHNICAL SPECIFICATIONS

Secondary backing:	SB
Quality code:	SQS
Manufacturing process:	Tufted
Manufacturing process (hospitality):	1/10" Cut Pile
Pile composition:	PA
Pile composition (hospitality):	PA
Fire behaviour:	Bfl-s1
EN 1307 Classification:	Cl. 33 Commercial Heavy



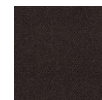
262 / Square / Camel 2



183
Rum 3



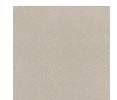
823
Slate 3



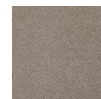
403
Coffee 3



122
Coral 2



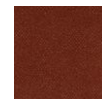
252
Magnolia
2



262
Camel 2



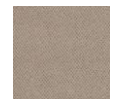
282
Havanna
2



312
Rust 2



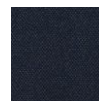
452
Sand 2



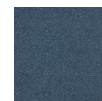
462
Hemp 2



682
Juniper 2



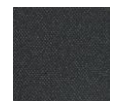
701
Navy 1



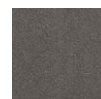
772
Sapphire
2



811
Charcoal
1



822
Slate 2



842
Moonshine
2



862
Granite 2